

## Unit 1: Computer Fundamentals

### What is Computer?

Computer is an electronic device that convert raw data into Information.

OR

Computer is an electronic device that takes raw data as input from the user and processes these data under the set of instructions (called program) and gives the result (output) and saves output for the future use.

It can process both numerical and non-numerical (arithmetic and logical) calculations

A computer has four functions	
a. Accepts data	Input
b. Processes data	Processing
c. Produces output	Output
d. Stores results	Storage

### Input (Data):

Input is the data entered into a computer from the input devices. It is the collection of letters, numbers, images etc.

### Process:

Process is the operation in which data is processes as per given instruction. It is totally internal process of the computer system.

### Output:

Output is the processed data given by computer after data processing. Output is also called as Result.

### Storage:

We can save these results in the storage devices for the future use.

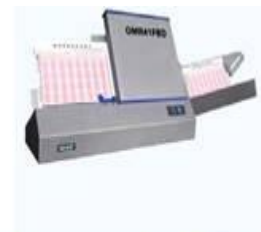
**Input Devices:** Is a devices which is used to enter the data in computer system  
Eg. Keyboard, Mouse, Touchscreen, Barcode Reader, Scanner, MICR, OMR etc.



Keyboard & Mouse



Bar code Reader



OMR(Used for answer sheet evaluation)

**Output Devices:** Those devices which is used to display the information.

Eg. Monitor, Printer, Plotter, Projector

**Output Devices:**



Monitor



Printer



Plotter



Projector